
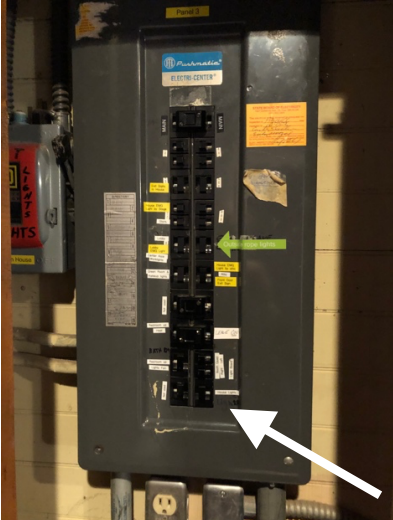


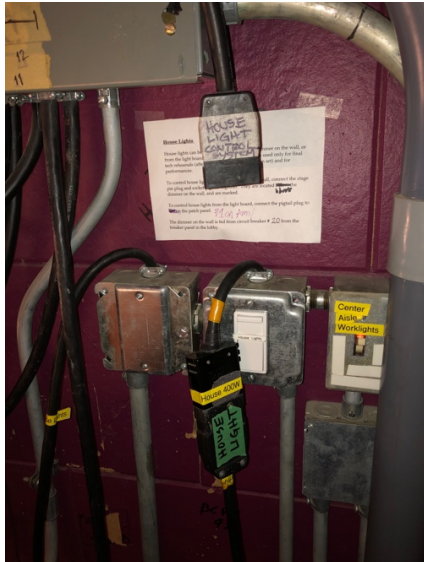
Lighting System Overview: Northfield Arts Guild Fall Productions

Arriving:

1	Houselight Setup and Circuit Patching The main Circuit breaker for the houselights is inside the electrical panel in the lobby. Go to the lighting booth Find the house light cables near the corner of the wall	 A
	Inside the door panel is the Circuit Breaker Box. The lower right circuit breaker operates the houselights when they are configured to be used without the lighting control system. Press the button in to turn the lights on and press again to turn them off.	

Next Page --->

- Go up the ladder steps to the lighting booth.
 - Find the house light cables near the corner of the wall. The plug with the green label “House Light” should be connected to the “House Light Control System” plug when you want to control the house lights with the lighting control system. (Right Image)
- When the green label “House Light” plug is connected to the “House 400w” plug, the house lights are controlled by the circuit breaker in the lobby.
- (Left Image)



Circuit Breaker Setup

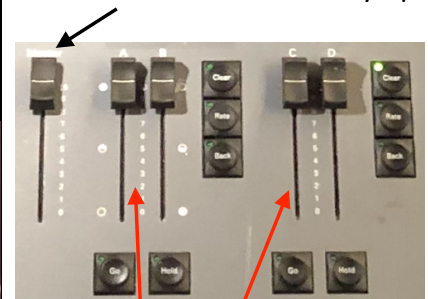


Lighting Control Board Setup

- 2** Turn on the lighting control system. Use the rocker switch at the back of the control system. Be sure the power button on the monitor is turned on (lower right corner of the screen).

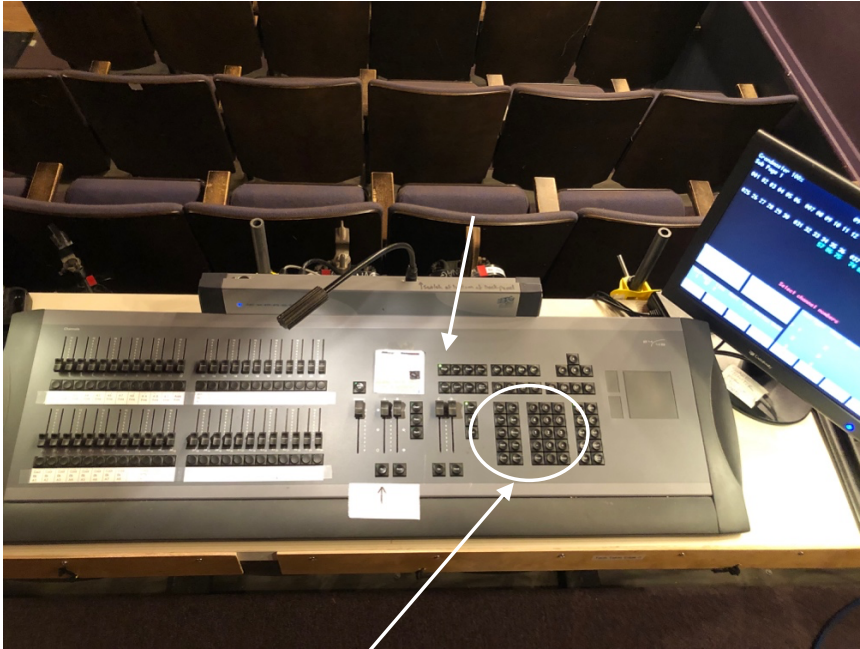


- The Grand Master fader should be raised all the way up.



- The A-B and C-D Faders should be in the UP position.

3 Press the “Stage” button to show the control channels and playback windows on the screen. This may have been already activated.

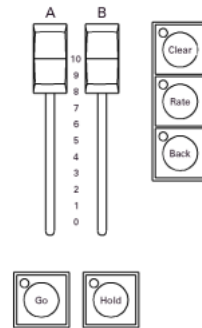


4 To play a light cue, press the [CUE] button, followed by the desired cue number and then press the [GO]button in the A-B Fader area.

Playing a cue

Selecting a cue moves it to the top of the Cue List. It will not run until you press [Go]. Follow these steps to select a cue and play it on the fader of your choice.

- | Keystrokes: | Action: |
|-----------------------------|--|
| 1. Press [Stage]. | Selects Stage display mode |
| 2. Press [Cue]. | Prompt reads:
Select cue number
To select cue type, press TYPE |
| 3. Press [1].[5]. | Selects cue 1.5 to play. Cue List moves cue 1.5 to the top of the list |
| 4. Press [Go] on fader A/B. | Cue 1.5 runs on fader A/B; Cue 2 moves to the top of the Cue List |



Each time the “Go” button is pressed, the next cue in the cue sequence will be played.

If you wish to jump to any cue in the cue list, press the [Cue] button, followed by the desired Cue number and then press [GO] in the A-B Fader area.

The Revolutionists show begins with CUE 1.

The Outsider show begins with CUE 101.

Go to a different cue

To playback a cue other than the cue highlighted on the Cue List, follow these steps:

- | Keystrokes: | Action: |
|---------------------|----------------------------|
| 1. Press [Stage]. | Selects Stage mode display |
| 2. Press [Cue] [2]. | Selects cue 2 |
| 3. Press [Go]. | Runs cue 2 |

BEFORE THE AUDIENCE COMES IN THE THEATER

1.	Bring up the first cue for the production (Cue 1 for <i>Revolutionists</i> or Cue 101 for <i>The Outsider</i>).	
2.	Use the GO button to sequence through the opening three cues. The third cue for each show is a blackout. Check the theater space to verify the stage and audience area is dark. If not- figure out what needs to be turned off- ghost light, work lights, backstage lights, center aisle lights, etc.	
3.	Then, press GO again to bring up the opening stage cue. If all looks correct, go back to the opening cue for the show (1 for <i>Revolutionists</i> or 101 for <i>The Outsider</i>). [CUE] [#] [GO].	
4.	Let the house manager know that lights are ready.	

Leaving at the end of the production

1.	Fade out all the stage lights. Bringing the Grand Master Fader down to zero will accomplish this. Cue .5 in the cue list is a full blackout. Running this Cue will also accomplish a full fade of all lights.	
2.	Turn off the power switch on the lighting control system.	
3.	Re- plug the house light cable to be controlled by the circuit breaker. Test the circuit breaker to verify the house lights work.	